

GENOSYS SKIN CARING BLEMISH BALM CUSHION



SKIN CARING BLEMISH BALM CUSHION

Concept

GENOSYS SKIN CARING BLEMISH BALM CUSHION is a BB cushion that can be used after professional treatment. More than 60% of the product is composed of moisture essence, which enables a natural and healthy glow. Various peptide complex helps calm the irritated skin. (SPF 50+ / PA++++)



[NET WT. 15g / 0.52 oz.]

- BB cushion that can be used after the professional treatment
- Allows the users to wear convenient and quick base makeup in the morning.
- Type of Sunscreen: Hybrid (Chemical + Mineral)
- Components: 1 cushion+ 1 refill (puff included)
- Color: # 01 Ivory
02 Beige
03 Camel

SKIN CARING BLEMISH BALM CUSHION

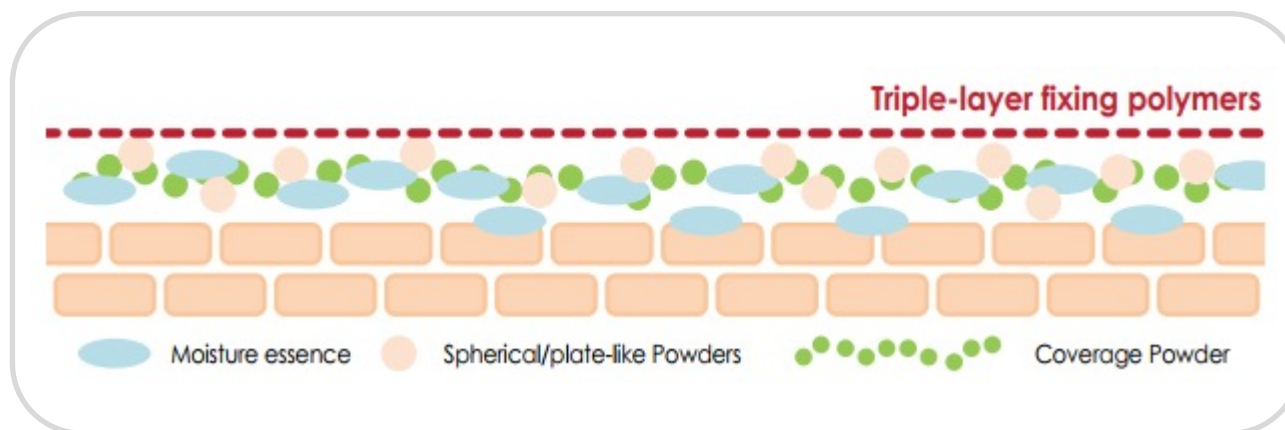
Mechanism

Skin care + Natural coverage + Long-wear formula

- 1) It contains moisture essence more than 60% / 9 regenerating peptides
→ Glowing skin expression and skin care after professional treatment

Moisture essence more than 60%

- 2) Light, comfortable and natural skin expression with light formula
- 3) Long-lasting formula with triple fixing polymers



SKIN CARING BLEMISH BALM CUSHION

Color Chart



SKIN CARING BLEMISH BALM CUSHION

NEW

Refill

'Refill only' product is available now. (SPF 50+ / PA++++)



[NET WT. 15g / 0.52 oz.]

- Components: 1 refill (puff included)
- Available Color: # 02 Beige
03 Camel
[#01 Ivory will be available in 2025.]

SKIN CARING BLEMISH BALM CUSHION

Puff

Waterdrop-Shape + Quadruple-Layer

- ☑ Waterdrop-shaped



The shape of the puff tip is waterdrop instead of round.

→ It makes easier to cover even the curved parts or narrow areas of the face.

- ☑ Quadruple-layered



The puff has quadruple layers where one layer of waterproof film is added to the general tripled-layered puff, which prevents the content of the cushion from penetrating into sponge.

→ It prevents the contamination of the puff and reduces the waste of the essence.

SKIN CARING BLEMISH BALM CUSHION

How to use

Press the puff lightly onto cushion and pat evenly onto skin. We recommend patting the puff gently on the skin several times to enhance the long-lasting effect.

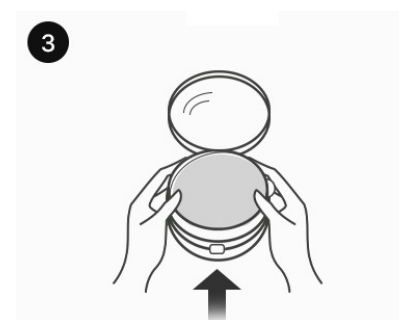
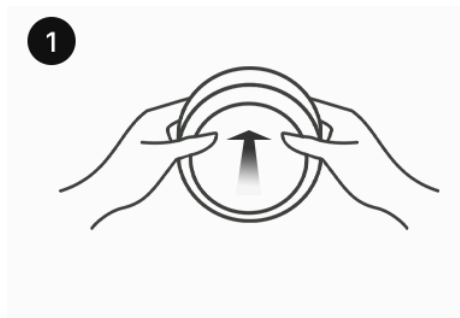
Usage tips



1. If you want to use both INTENSIVE BLEMISH BALM CREAM and SKIN CARING BLEMISH BALM CUSHION,
 - ▷ For the base makeup in the morning → GENOSYS INTENSIVE BLEMISH BALM CREAM
 - ▷ For the correction of makeup → GENOSYS SKIN CARING BLEMISH BALM CUSHION
2. If you want to choose one,
 - ▷ For natural, glowing complexion and tone correction → GENOSYS INTENSIVE BLEMISH BALM CREAM
 - ▷ For long-lasting coverage and make-up effect → GENOSYS SKIN CARING BLEMISH BALM CUSHION

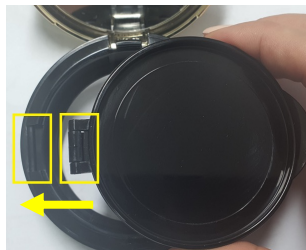
SKIN CARING BLEMISH BALM CUSHION

How to replace refill



STEP 1. Open the lid of the cushion and push the bottom of the refill up with thumbs to separate the refill.

STEP 2. Put the new refill in the container and adjust the position of the refill to fit the container.



STEP 3. Press the refill down until you hear 'clicking sound'.

GENOSYS SKIN CARING BLEMISH BALM CUSHION

KEY INGREDIENTS

SKIN CARING BLEMISH BALM CUSHION

Repairing Pep9 Complex

Promotion of Collagen Induction, Skin Regeneration

- Hexapeptide-9, Copper Tripeptide-1, Palmitoyl Pentapeptide-4, Palmitoyl Tripeptide-1, Hexapeptide-11, Tripeptide-1, Alanine/Histidine/Lysine Polypeptide Copper HCl

Firming

- Acetyl Hexapeptide-8

Skin Brightening

- Nonapeptide-1

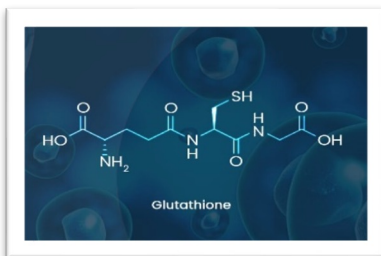
SKIN CARING BLEMISH BALM CUSHION

Volufiline™



- Sarsasapogenin from anemarrhena asphodeloides root
- It provides a volume-enhancing benefit by a cosmetic lipofilling-like effect.
- Rich in saponin, it has anti-inflammatory and antioxidant features.

Glutathione



- A powerful antioxidant
- It helps brighten and even skin by blocking the tyrosinase activity.
- It has a beneficial effect for cystic acne or even the occasional breakout.

Thank You